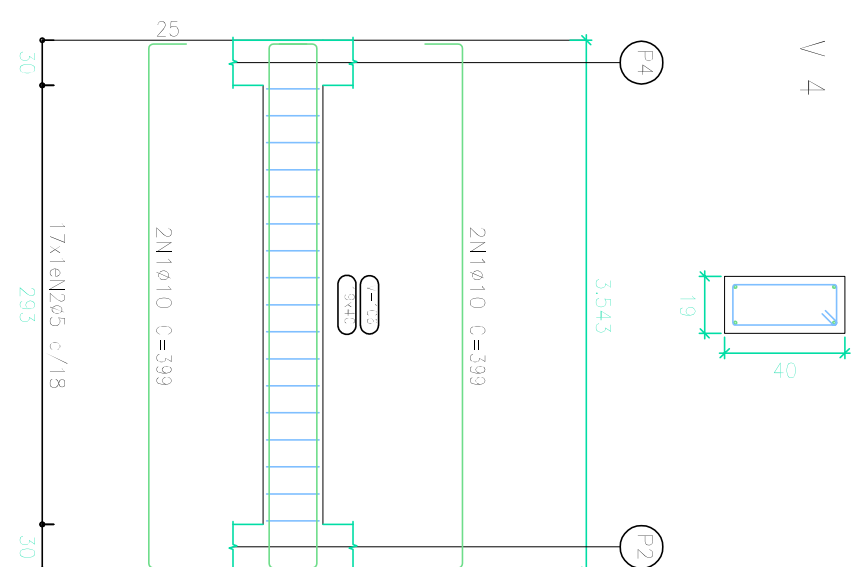
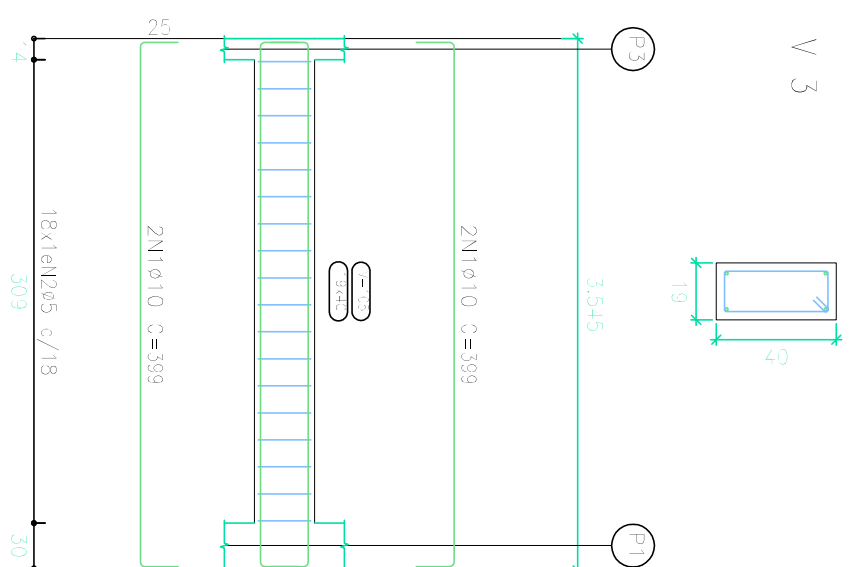
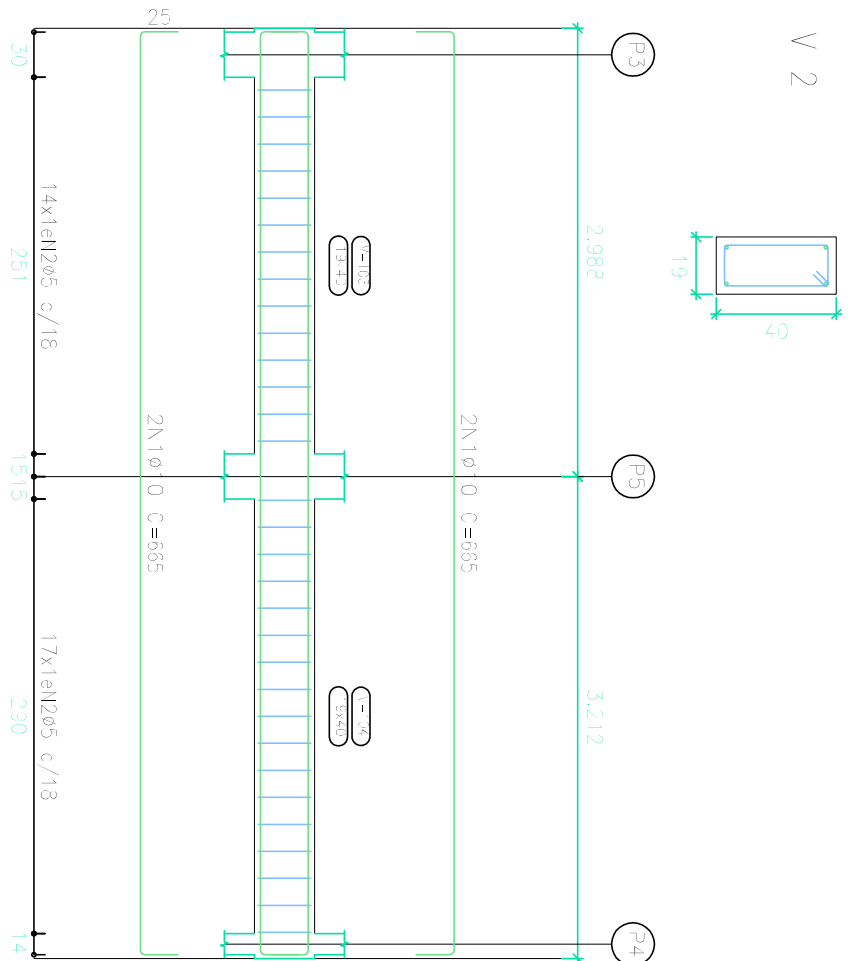
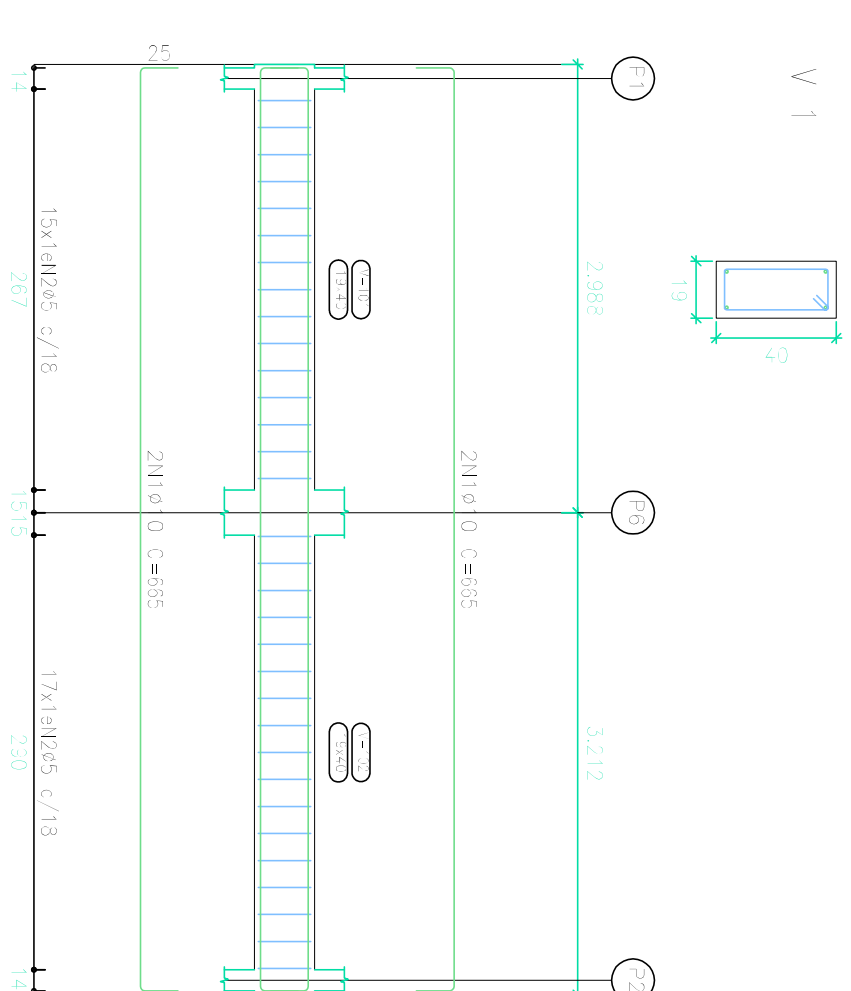
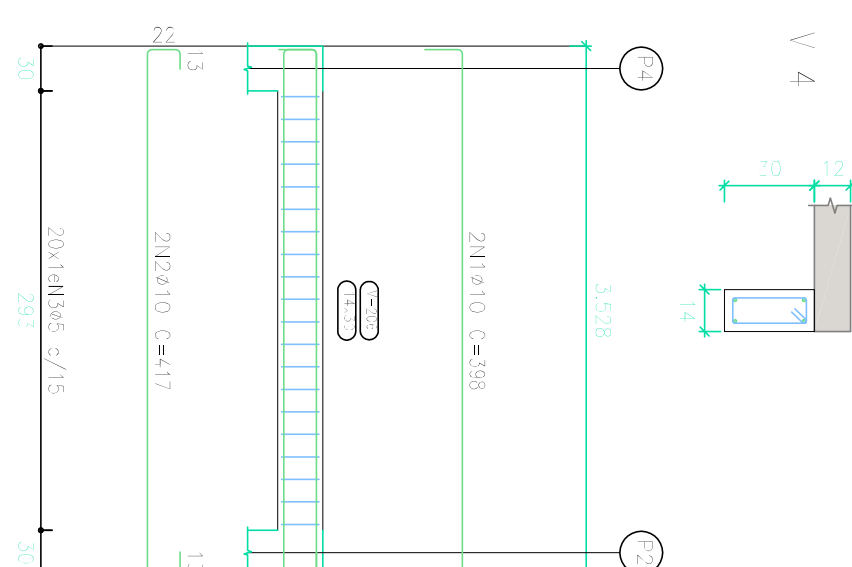
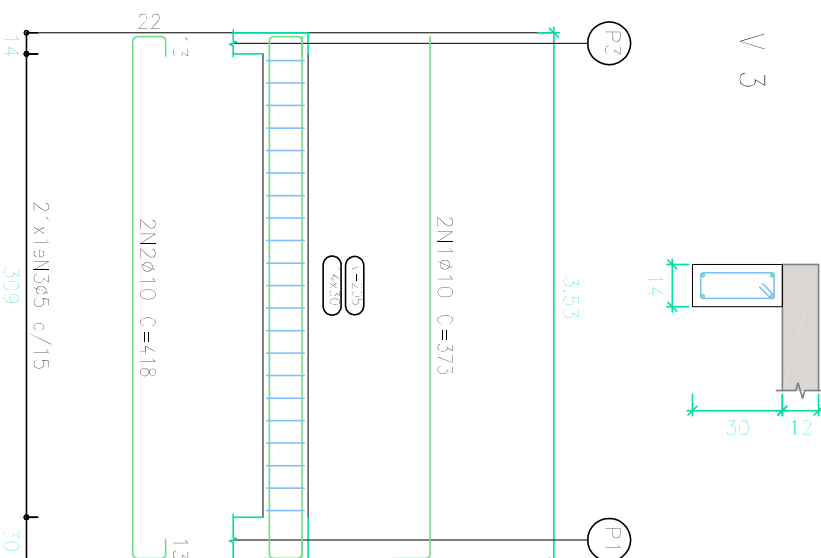
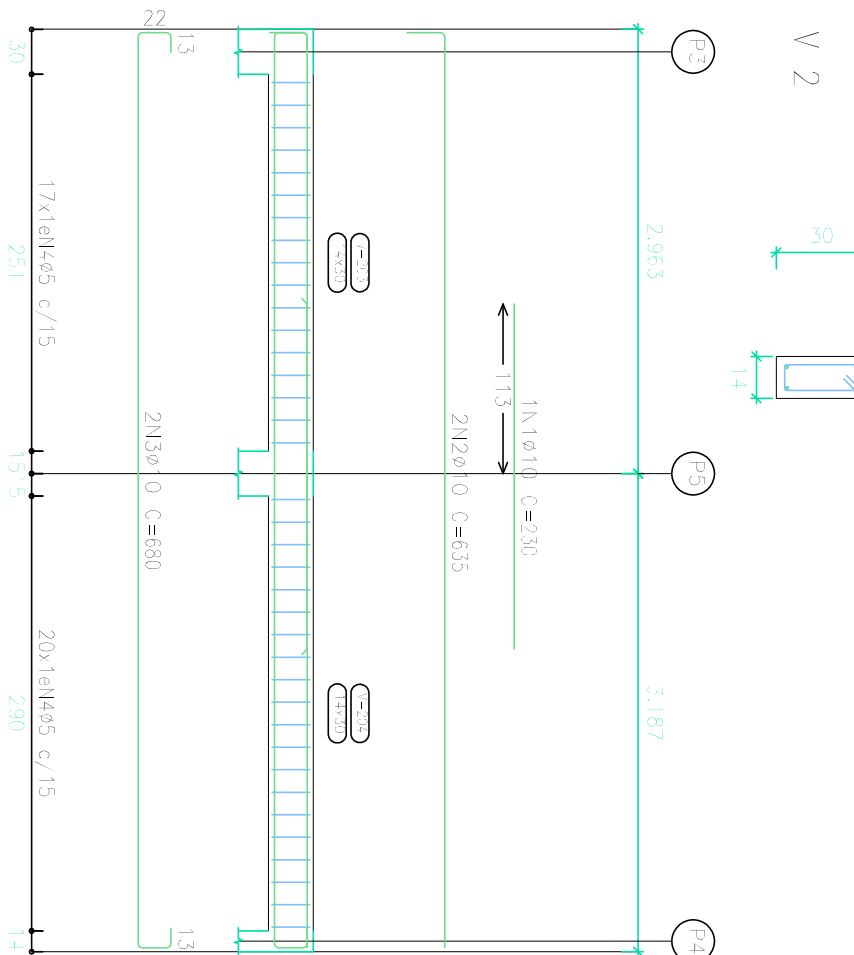
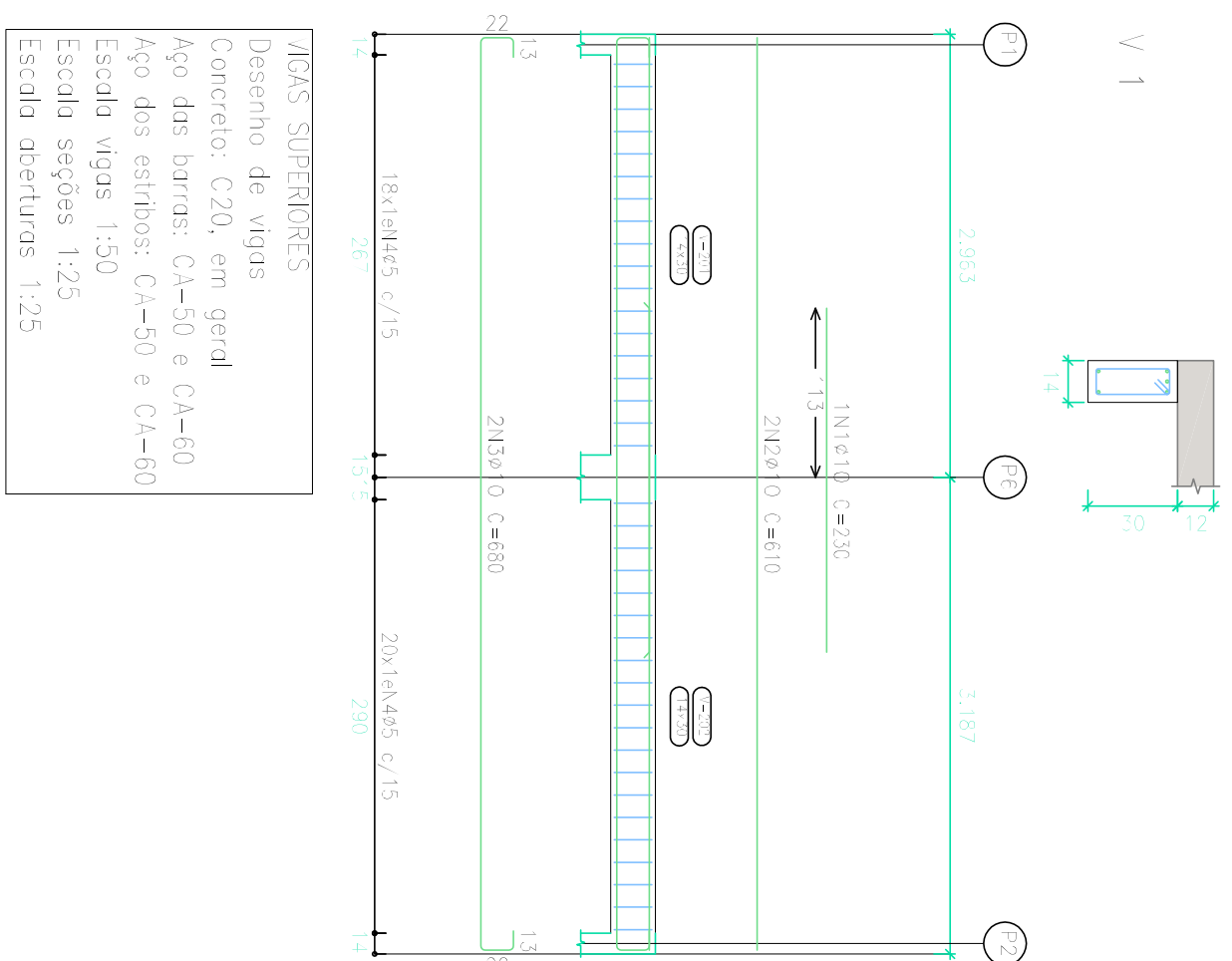


Element	Recovery μ_{g}	Equipping (cm)	Comp. Total (cm)	C ₂₅₋₅₀ (kg)	(kg)	
P = m/4	40.0	4	366	1460	5.0	
	29.5	28	77	2233	3.5	
	4.0	4	115	400	2.8	
	4.0	4	71	213	0.3	
	49.5	4	1			
			total	1526	13.0	
			(%)	18.0	12.6	
P3	18.0	4	1	365	1460	5.0
	2.0	4	370	1420	3.1	
	39.5	28	77	2233	3.5	
	46.5	38	21	12.6	1.9	
	48.0	4	115	924	3.7	
69.5	3	69	207	0.3		
			total	1075	26.2	
			(%)	10.5	6.3	
P = m/6	18.0	4	365	1460	5.0	
	29.5	28	77	2233	3.5	
	18.0	4	115	400	2.8	
	49.5	3	71	213	0.3	
				total	1075	13.0
			(%)	12.0	4.2	
Recovery μ_{g} Comp. Total C ₂₅₋₅₀ (kg)	13.6	91	91	910	9.2	
C ₄₀₋₆₀ 95	15.3	27	27	273	27.3	
			116			

Resumo Aço Fibras	Comp. total (m)	Peso + 10% (kg)	Total
CA-50 Ø10	134.6	91	91
CA-60 Ø5	158.9	27	27
Total			118

[illegible]

Resumo Açç Desenho de vigas	Comp. total (m)	Peso + 10% (kg)	Total
CA-50	85,1	58	58
CA-60	103,9	18	18
Total			76

[illegible]

EXATA

ENGENHARIA E COMÉRCIO LTDA.

R. Riedmann, 240 - Centro
Campesina - SP - CEP:13015-320
Fone/Fax: (19) 3236 - 1034

Site: www.exatasimp.com.br
e-mail: contato@exatasimp.com.br

CONTRATANTE	LOCAL
PREFEITURA MUNICIPAL DE HORTOLÂNDIA	EMEF Tarsila do Amaral R. Visc. do Rio Branco, 160 - Jardim Amanda II

OBRA	TÍTULO	FOLHA
MUNICIPAL	PROJETO ESTRUTURAL	
Nº OBRA		
-	COZINHA	
Nº ART	DETALHAMENTO DE PILARES E VIGAS	
2802723021821942		

AUTOR DO PROLETO	EDUARDO PRATA	DATA	11/2021
DESENHO	EXATA ENGENHARIA	ESCALA	INDICADA

	FOLIA	
SAS	$\frac{14}{32}$	A