

Technical drawing of a mechanical part, likely a bracket or support, showing dimensions and material specifications.

Dimensions:

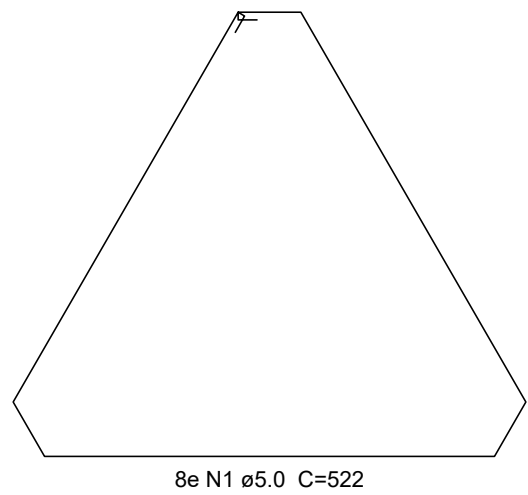
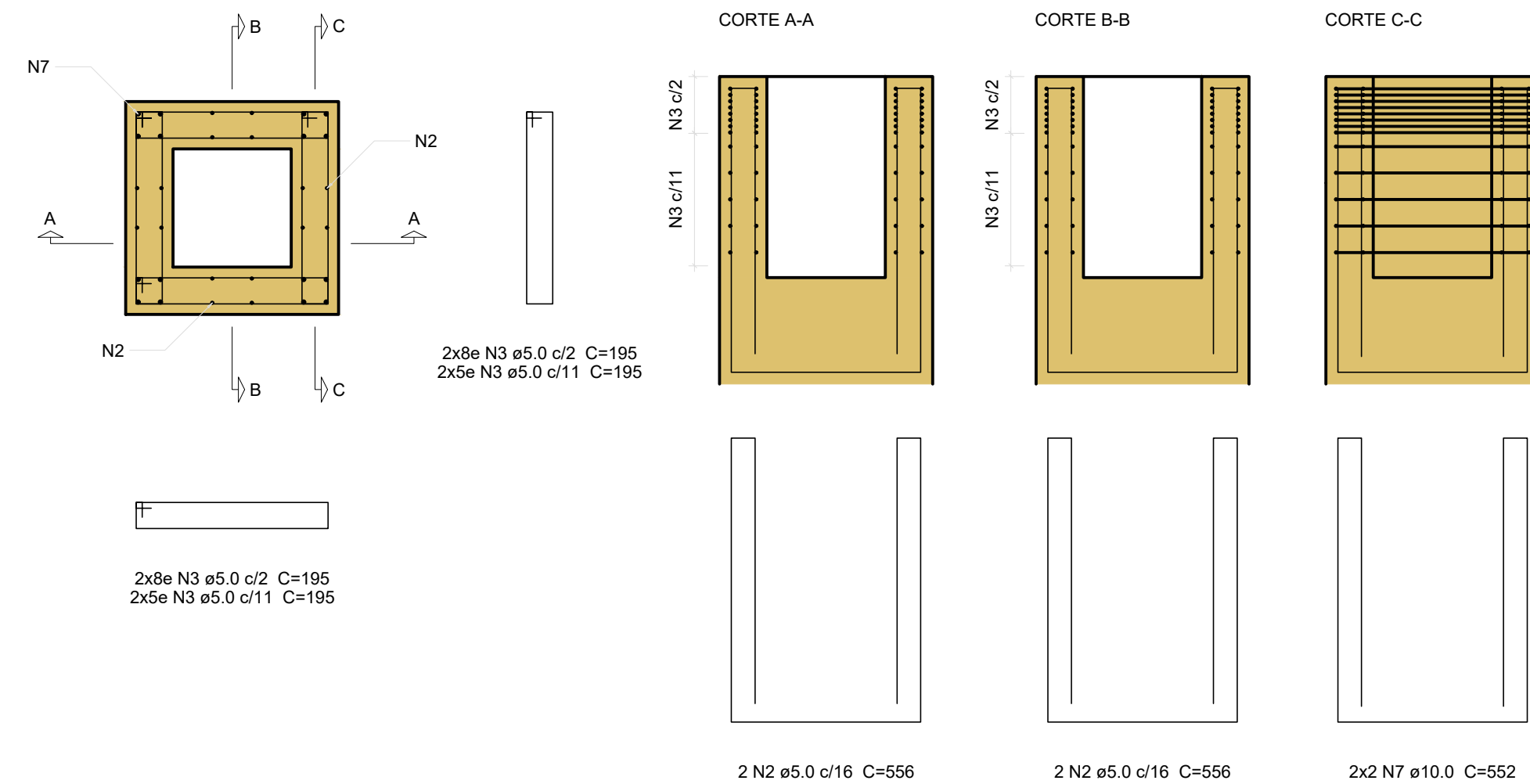
- Overall height: 145.00
- Overall width: 100.00
- Height of the main body: 85.00
- Height of the top flange: .50
- Height of the mounting holes: .95

Material and Finish:

- Material: N6 (Nickel 60)
- Finish: N6 (Nickel 60)

Mounting Holes:

- 3x7 N6 $\phi 10.0$ c/4 C=293



Technical drawing of a mechanical part, likely a base plate or bracket, showing dimensions and material specifications.

Dimensions:

- Overall height: 145.00
- Overall width: 100.00
- Height of the central cutout: 85.00
- Top surface finish: -50
- Bottom surface finish: -95

Material and Surface Treatment:

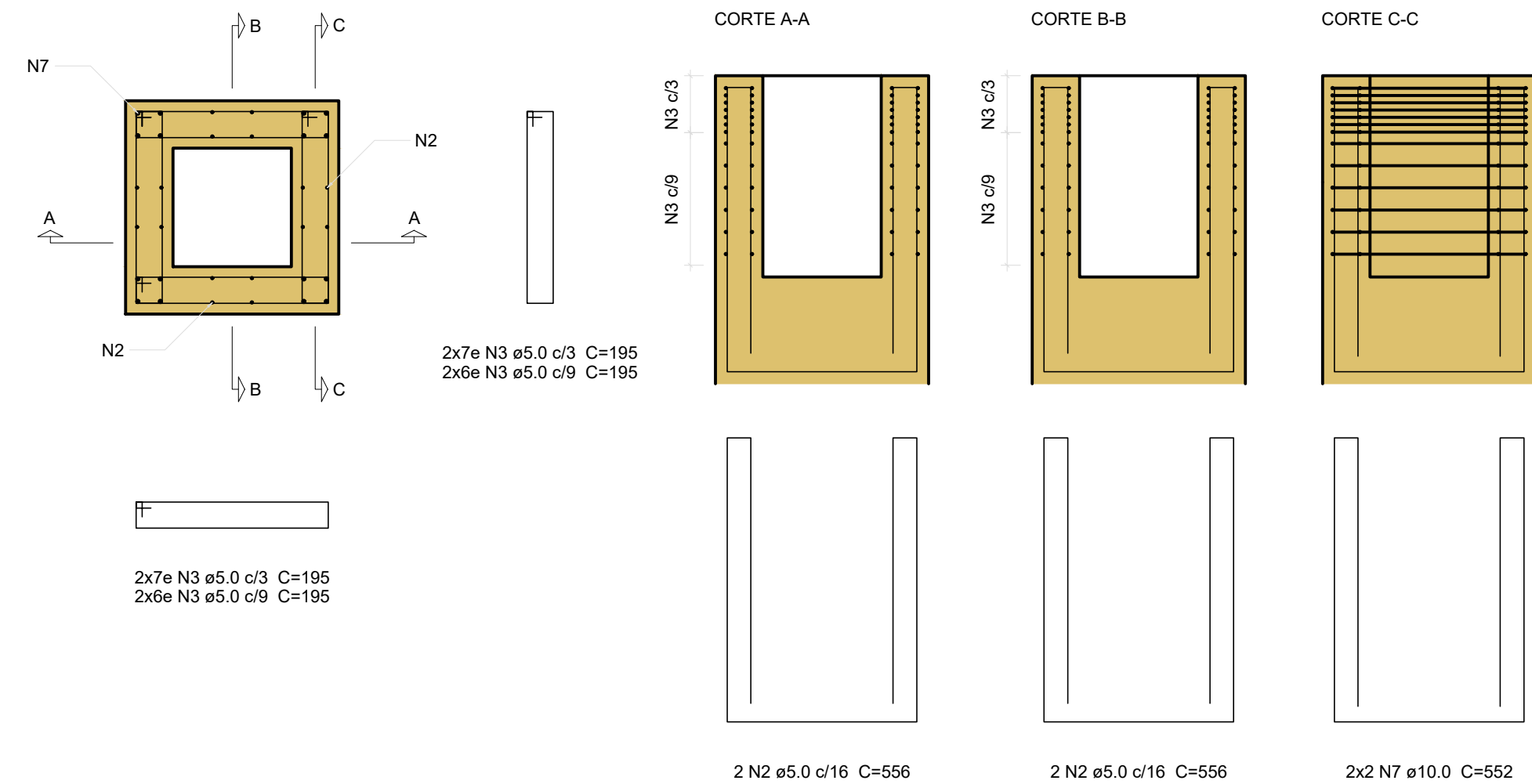
- Material: N8
- Surface treatment: N8

Assembly Details:



- Four mounting holes are indicated by small circles on the bottom surface.
- Four mounting holes are indicated by small circles on the bottom surface.
- Four mounting holes are indicated by small circles on the bottom surface.
- Four mounting holes are indicated by small circles on the bottom surface.

Assembly Instructions:

- 3x4 N8 ø12.5 c/8 C=292



Volume de concreto (C-30) = 3.76 m³
Área de forma = 16.56 m²

				MUNICÍPIO DE HORTOLÂNDIA		Administração JOSE NAZARENO ZEZÉ GOMES 2021-2024		
Projetista: FUNDAÇÃO PARA O DESENVOLVIMENTO TECNOLÓGICO DA ENGENHARIA			Obra: CONSTRUÇÕES DE ANEXOS - ENTORNO PAÇO					
			Local: PROLONG. ESTRADA SABINA BAPTISTA DE CAMARGO			Nº Contrato: 189/2023		
Coordenador do Projeto: Antonio Carlos da Fonseca			RRT/ART: 28027230231457406 CAU/CREA: 0600420948-SP		Viato:		Título: ESTUDOS E PROJETOS DE ESTRUTURA - ANEXO II - DETALHES - BLOCOS Código: DE-PB-3.0B.02-EST-007	
			SECRETARIA MUNICIPAL DE OBRAS		DEPARTAMENTO DE PROJETOS - APROVAÇÃO <small>(CAMARGO E ASSIMILAR)</small>		Data: 01/2024 Revisão: 01	
Elaboração: Julio Cezar Tonetti			RRT/ART: 13700925 CAU/CREA: A58108-9		Viato:		SECRETARIA MUNICIPAL DE OBRAS	
			SECRETARIA MUNICIPAL DE OBRAS		DEPARTAMENTO DE OBRAS - APROVAÇÃO <small>(CAMARGO E ASSIMILAR)</small>		Escala: IND. Folha: 07/43	
			SECRETARIA DE MOBILIDADE URBANA		DEPARTAMENTO DE PROJETOS - APROVAÇÃO <small>(CAMARGO E ASSIMILAR)</small>			